



FOR STARTERS



OFFERS IN EXCESS OF
£395,000

MAIN COURSE

Situated in a quiet position on the ever-popular Chedworth Close in Stratford, this beautifully presented three double bedroom detached home has been finished to a high standard throughout and is ready for its next owners to move straight into and enjoy. Offering spacious and versatile accommodation, alongside a private south-facing garden, this is a home perfectly suited to growing families, downsizers or anyone looking for modern living without compromising on space.

To the front, the property boasts an attractive frontage with a driveway providing parking for two vehicles, along with convenient side access leading to the rear garden. Stepping inside, you are welcomed by a practical entrance hallway with ample space for coats and shoes before entering the impressive main living room. This generous space feels bright and open, with a window overlooking the front aspect and the staircase thoughtfully positioned to the rear of the room.

To the back of the home is the stunning kitchen dining room, undoubtedly the heart of the property. Beautifully upgraded, the kitchen features a range of integrated appliances, stylish fittings and plenty of storage, while still offering ample space for a family dining table at the centre of the room. French doors open directly onto the rear garden, creating a fantastic space for entertaining and everyday family life. Off the kitchen is a useful downstairs WC.

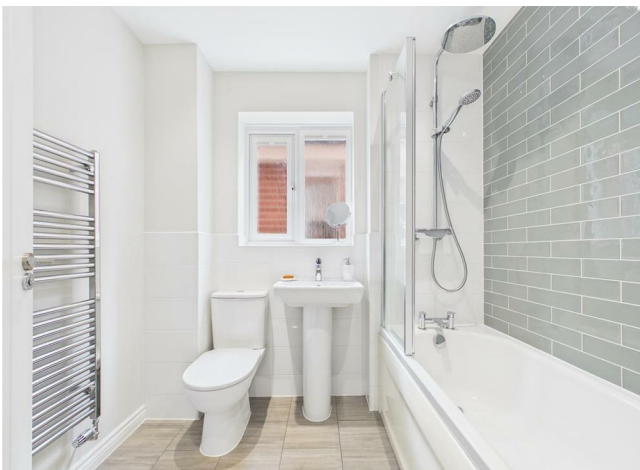
Upstairs, the property continues to impress with three genuinely



spacious double bedrooms. The superb principal bedroom benefits from two floor-to-ceiling fitted wardrobes with a modern ensuite shower room positioned between them. The second bedroom also enjoys fitted wardrobes, while the third remains an excellent-sized double room, ideal for guests, children or a home office. Completing the first floor is a beautifully presented family bathroom, finished in a modern and contemporary style.


Outside, the rear garden is a real highlight of the home. South-facing and wonderfully private, it offers the perfect space to relax and entertain, with a raised decked seating area ideal for outdoor dining, leading onto a well-maintained lawn.

Whether you are a small family looking to upsize, or perhaps downsizing without sacrificing space and quality, this exceptional home simply must be viewed to be fully appreciated.




KEY INGREDIENTS

 Tenure
Freehold

 Council Tax
Band - E

 EPC
Band - B

 South Facing

 Mains Gas, Electric,
Water, Drainage

 Gas Central Heating


Stratford High School
Alcester Grammar

**WHY NOT TAKE
A LOOK INSIDE?
GIVE US A CALL
01789 414222**

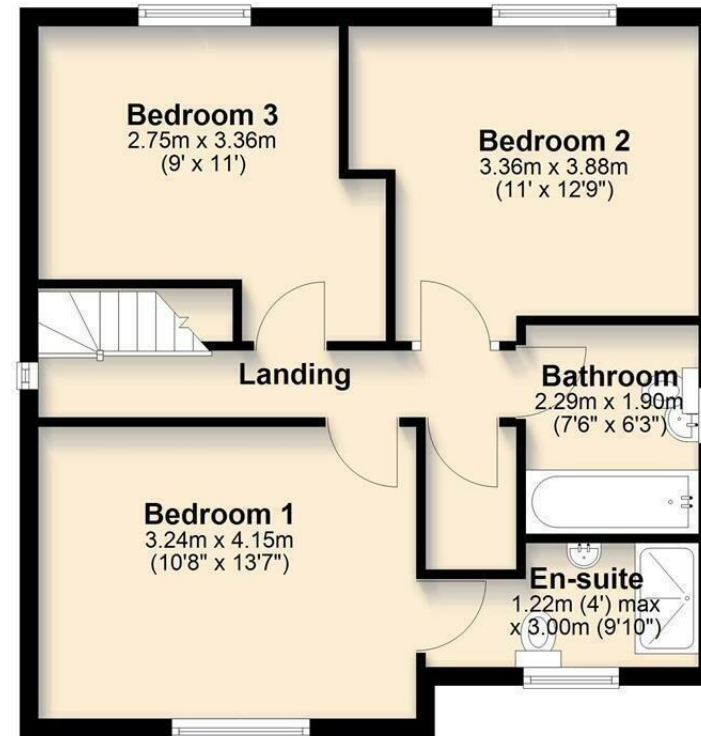
Ground Floor

Approx. 52.5 sq. metres (565.2 sq. feet)



First Floor

Approx. 51.8 sq. metres (557.5 sq. feet)



Total area: approx. 104.3 sq. metres (1122.7 sq. feet)

FOR MORE INFO AND
TO SEE OUR OTHER
LOVELY PROPERTIES
CHECK OUT OUR WEBSITE

MOVEWITHEDWARDS.CO.UK

HAVE YOU GOT
A PROPERTY
TO SELL?
WE'D LOVE TO
HAVE A CHAT
01789 414222

DID YOU KNOW WE ALSO
DO MORTGAGES.
FOR FREE ADVICE
SPEAK TO
ONE OF OUR
CONSULTANTS

